

# 15 TORONTO STREET



# ABOUT 15 TORONTO STREET

This immaculate building is located on Toronto Street, two blocks east of Yonge Street and one block north of King Street. In a location full of conveniences: steps to TTC, entertainment district, shops, restaurants and hotels - entertain clients with ease and convenience!

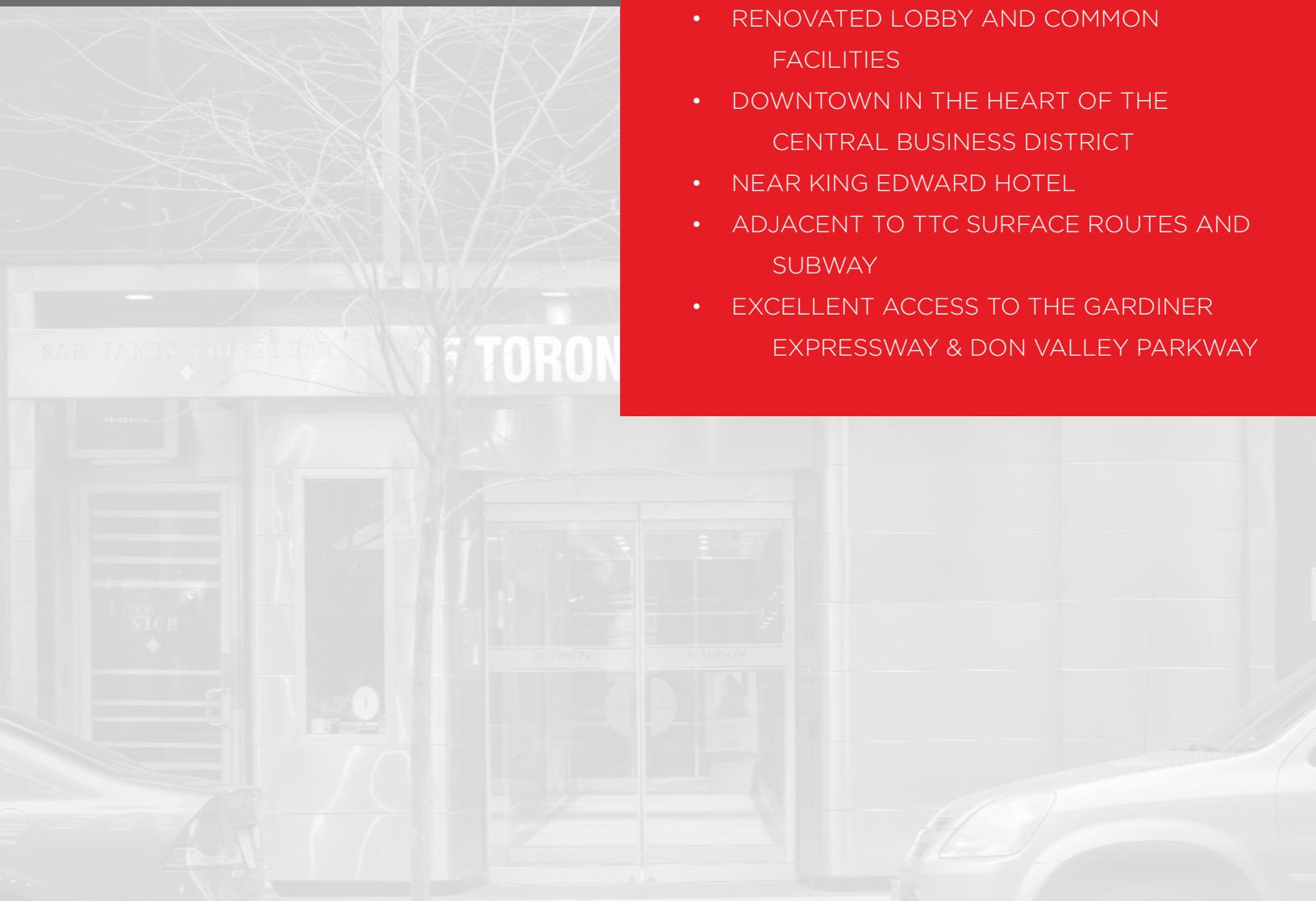
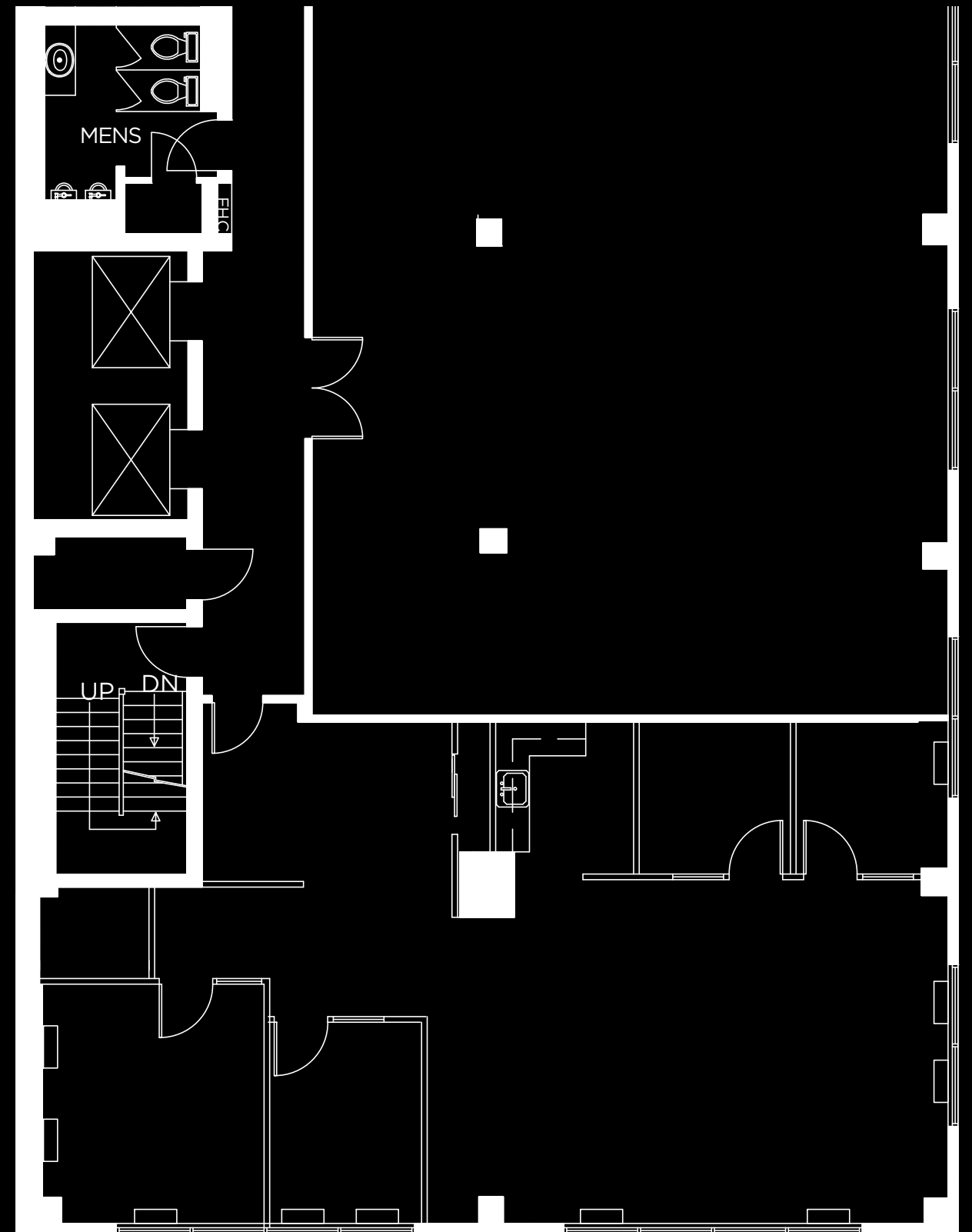
**SUITE 600**  
1,900 SQ.FT.

## PROPERTY

- 11-STOREY OFFICE BUILDING
- GLASS CLAD
- GROUND FLOOR RETAIL TENANTS
- APPROXIMATELY 50,000 SQUARE FEET OF RENTABLE OFFICE SPACE
- 5,000 SQUARE FOOT FLOOR PLATE

## AMENITIES

- EQUIPPED WITH TWO COMPUTERIZED ELEVATORS
- ENTRYPHONE SYSTEM
- BUILT OUT SUITES AVAILABLE IMMEDIATELY
- RENOVATED LOBBY AND COMMON FACILITIES
- DOWNTOWN IN THE HEART OF THE CENTRAL BUSINESS DISTRICT
- NEAR KING EDWARD HOTEL
- ADJACENT TO TTC SURFACE ROUTES AND SUBWAY
- EXCELLENT ACCESS TO THE GARDINER EXPRESSWAY & DON VALLEY PARKWAY



# ABOUT 15 TORONTO STREET

This immaculate building is located on Toronto Street, two blocks east of Yonge Street and one block north of King Street. In a location full of conveniences: steps to TTC, entertainment district, shops, restaurants and hotels - entertain clients with ease and convenience!

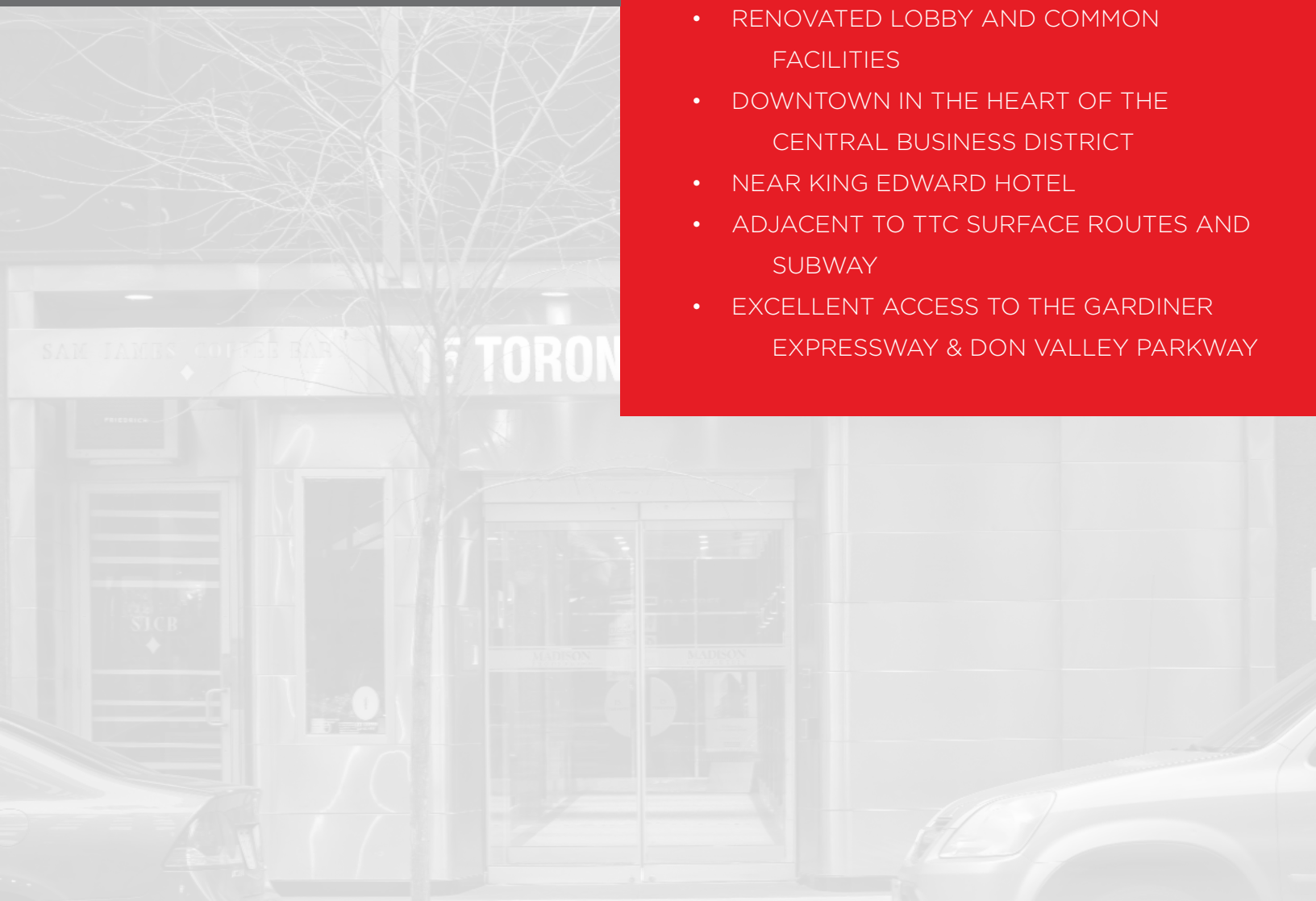
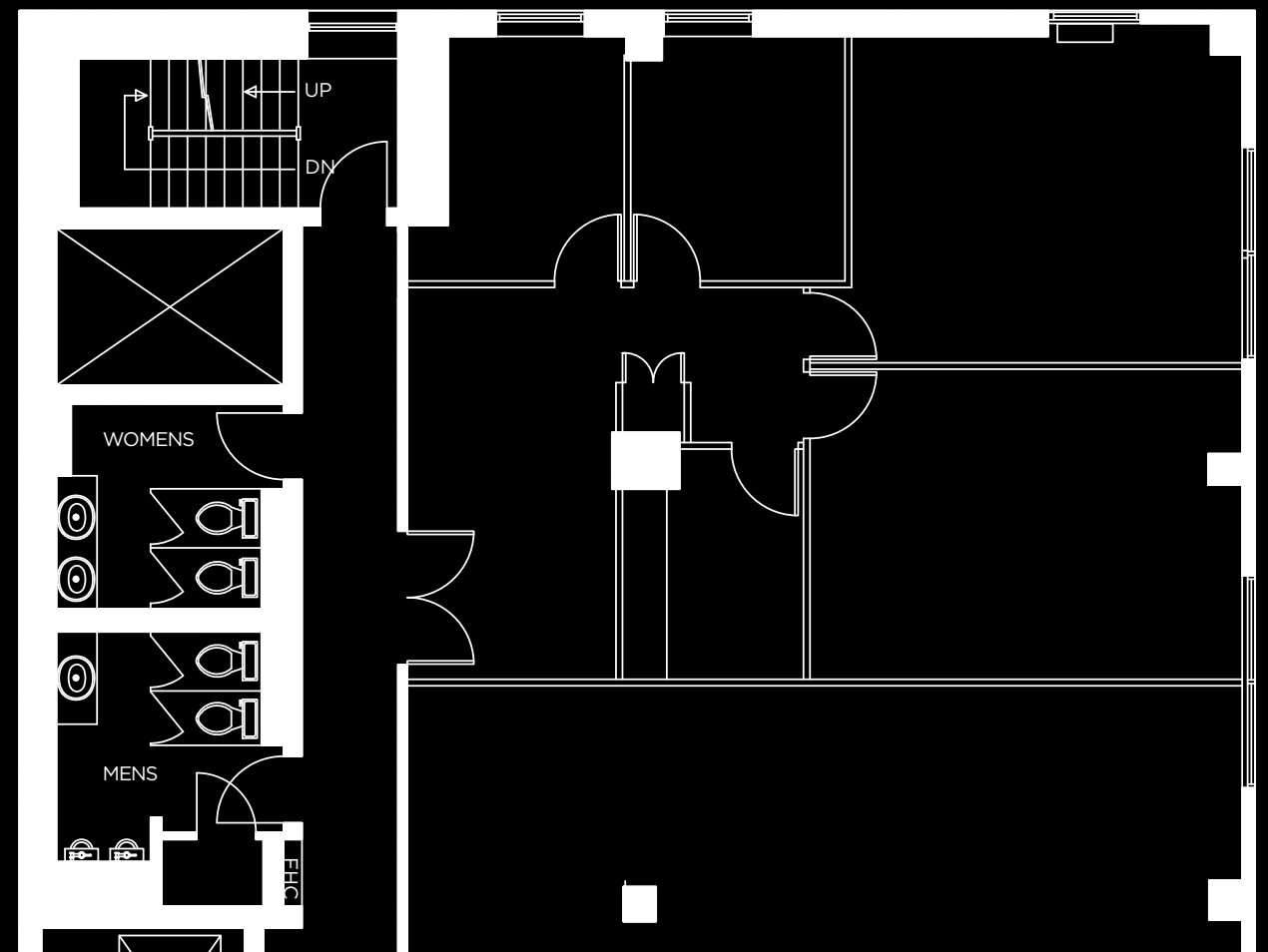
**SUITE 602**  
1,371 SQ.FT.

## PROPERTY

- 11-STORY OFFICE BUILDING
- GLASS CLAD
- GROUND FLOOR RETAIL TENANTS
- APPROXIMATELY 50,000 SQUARE FEET OF RENTABLE OFFICE SPACE
- 5,000 SQUARE FOOT FLOOR PLATE

## AMENITIES

- EQUIPPED WITH TWO COMPUTERIZED ELEVATORS
- ENTRYPHONE SYSTEM
- BUILT OUT SUITES AVAILABLE IMMEDIATELY
- RENOVATED LOBBY AND COMMON FACILITIES
- DOWNTOWN IN THE HEART OF THE CENTRAL BUSINESS DISTRICT
- NEAR KING EDWARD HOTEL
- ADJACENT TO TTC SURFACE ROUTES AND SUBWAY
- EXCELLENT ACCESS TO THE GARDINER EXPRESSWAY & DON VALLEY PARKWAY



# 15 TORONTO STREET

