

160 EGLINTON EAST



ABOUT 160 EGLINTON EAST

This prestigious 7-storey building is located on the north side of Eglinton Avenue four blocks east of Yonge Street. Public parking spaces for clients located at the back of the building and there is also underground tenant parking available. Close to many amenities. Enjoy many great and convenient amenities including: TTC, subway, restaurants, hotels and shops and much more!

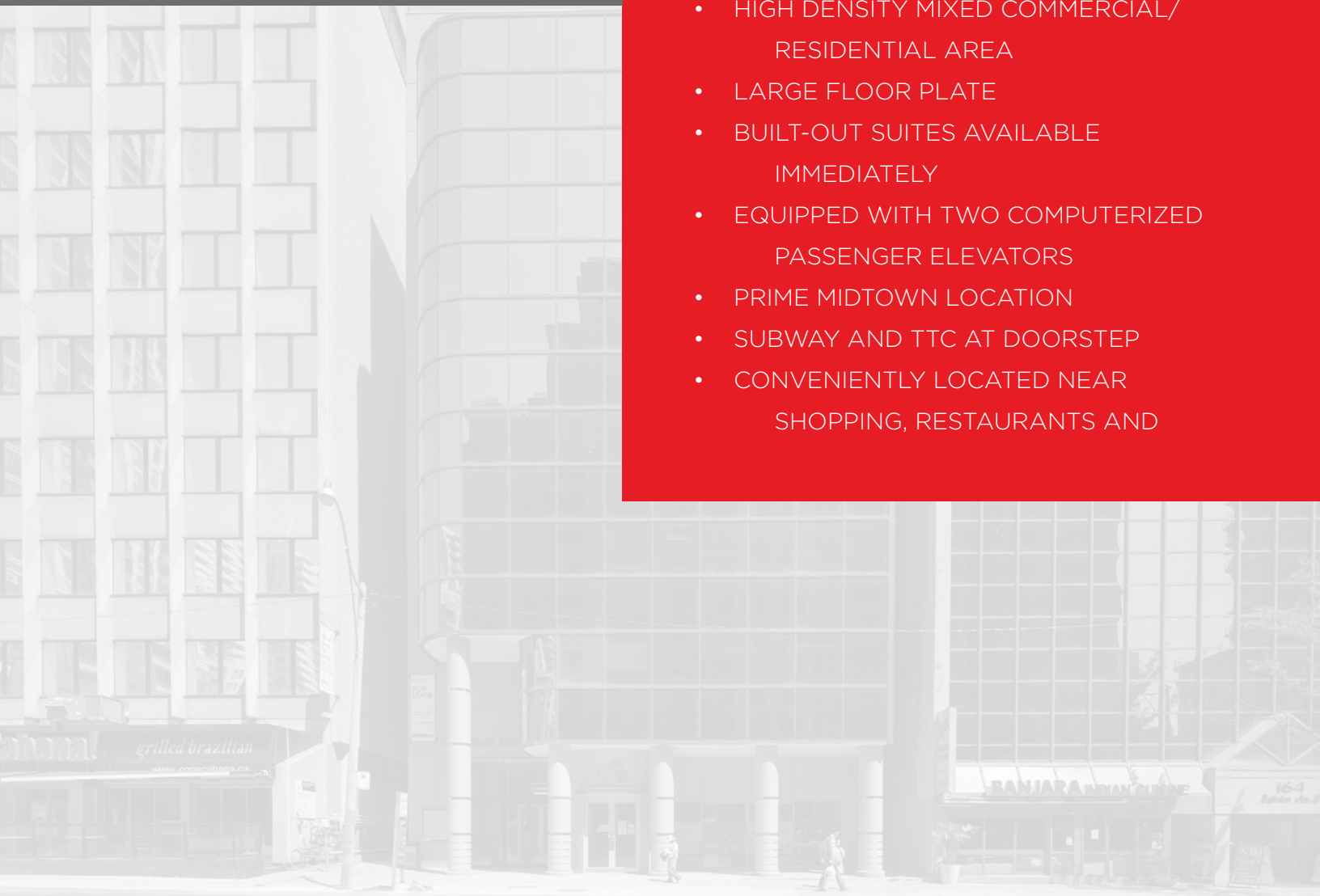
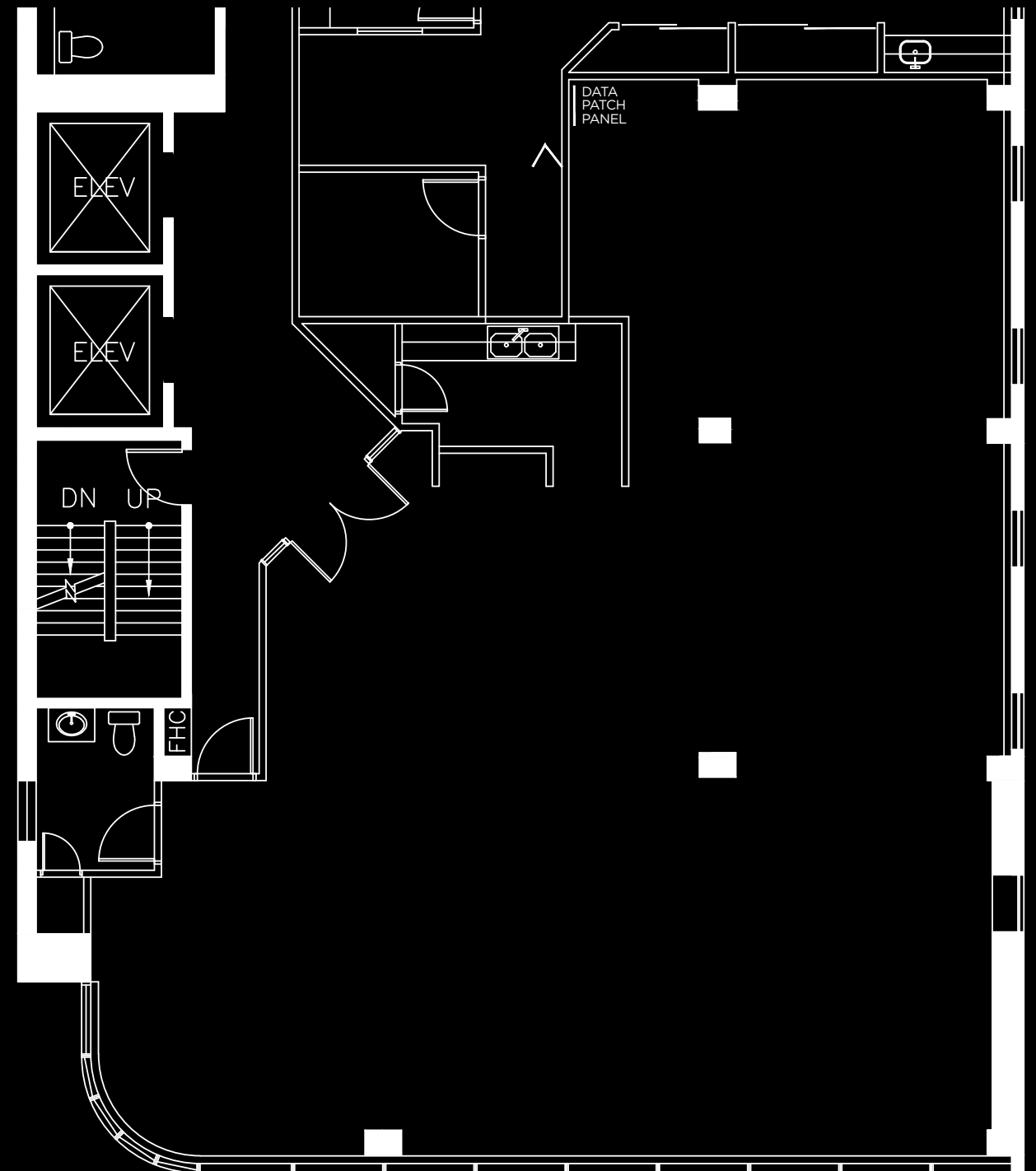
SUITE 400
2,906 SQ.FT.

PROPERTY

- 7-STOREY COMMERCIAL OFFICE BUILDING
- GROUND FLOOR CITY RUN DAYCARE
- REFLECTIVE GLASS EXTERIOR
- 50,000 SQUARE FEET OF RENTABLE OFFICE SPACE

AMENITIES

- BARRIER FREE ACCESS
- CARD ACCESS SECURITY SYSTEM
- OUTDOOR PUBLIC PARKING AVAILABLE
- HIGH DENSITY MIXED COMMERCIAL/ RESIDENTIAL AREA
- LARGE FLOOR PLATE
- BUILT-OUT SUITES AVAILABLE IMMEDIATELY
- EQUIPPED WITH TWO COMPUTERIZED PASSENGER ELEVATORS
- PRIME MIDTOWN LOCATION
- SUBWAY AND TTC AT DOORSTEP
- CONVENIENTLY LOCATED NEAR SHOPPING, RESTAURANTS AND



160 EGLINTON EAST

