

90 EGLINTON WEST



ABOUT 90 EGLINTON WEST

This prestigious 6-storey building is located on the north side of Eglinton Avenue and one block west of Yonge Street. There is underground tenant parking available. Enjoy many great and convenient amenities including: TTC, subway, restaurants, hotels and shops and much more!

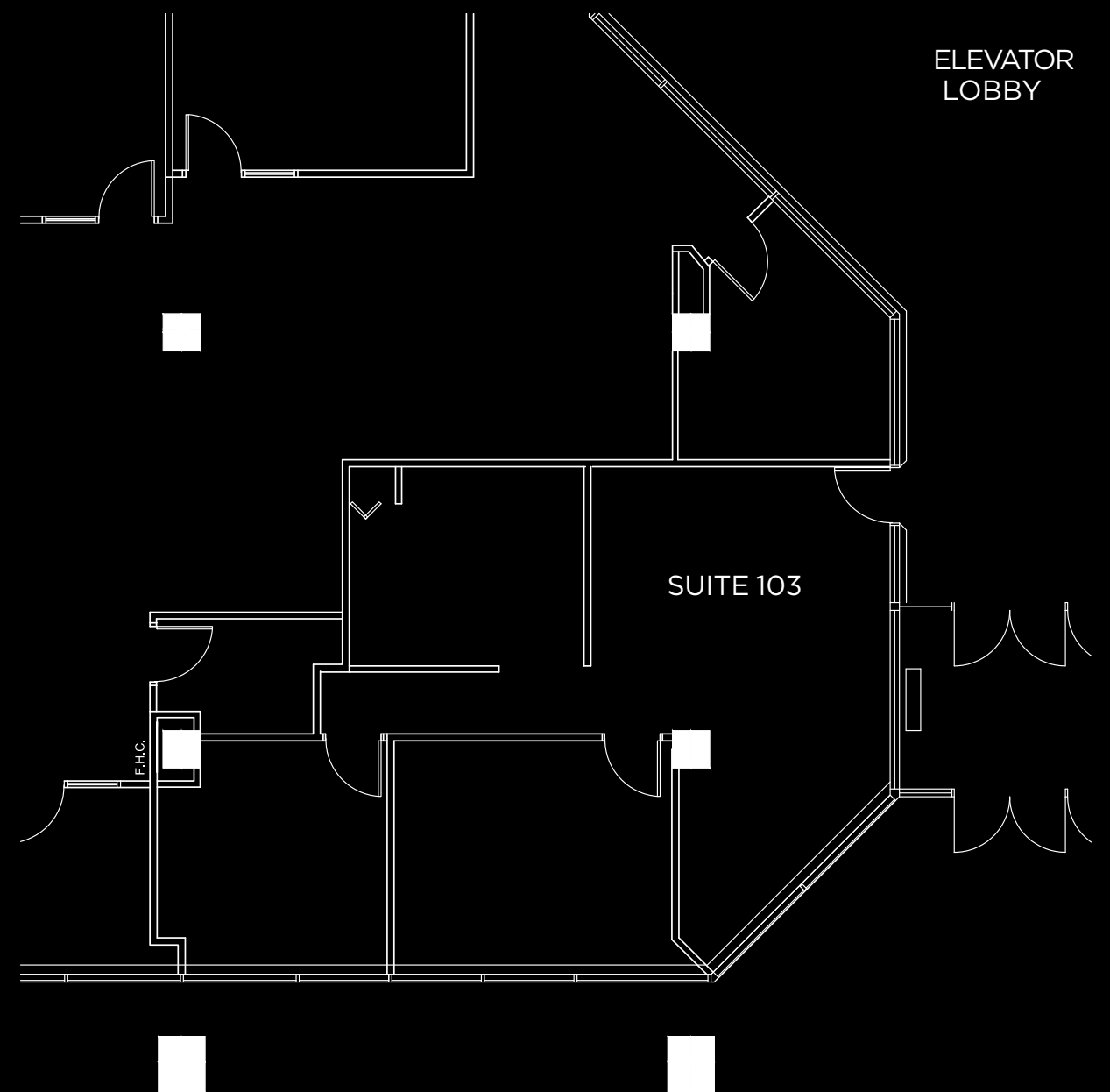
PROPERTY

- 6-STOREY COMMERCIAL OFFICE BUILDING
- GROUND FLOOR RETAIL TENANTS
- REFLECTIVE GLASS EXTERIOR

AMENITIES

- BARRIER FREE ACCESS
- CARD ACCESS SECURITY SYSTEM
- OUTDOOR AND UNDERGROUND PUBLIC PARKING AVAILABLE
- HIGH DENSITY MIXED COMMERCIAL RESIDENTIAL AREA
- LARGE FLOOR PLATE
- EQUIPPED WITH THREE COMPUTERIZED PASSENGER ELEVATORS
- PRIME MIDTOWN LOCATION
- SUBWAY AND TTC AT DOORSTEP
- CONVENIENTLY LOCATED NEAR SHOPPING, RESTAURANTS AND FITNESS CENTRES

SUITE 103
1,056 SQ.FT.



ABOUT 90 EGLINTON WEST

This prestigious 6-storey building is located on the north side of Eglinton Avenue and one block west of Yonge Street. There is underground tenant parking available. Enjoy many great and convenient amenities including: TTC, subway, restaurants, hotels and shops and much more!

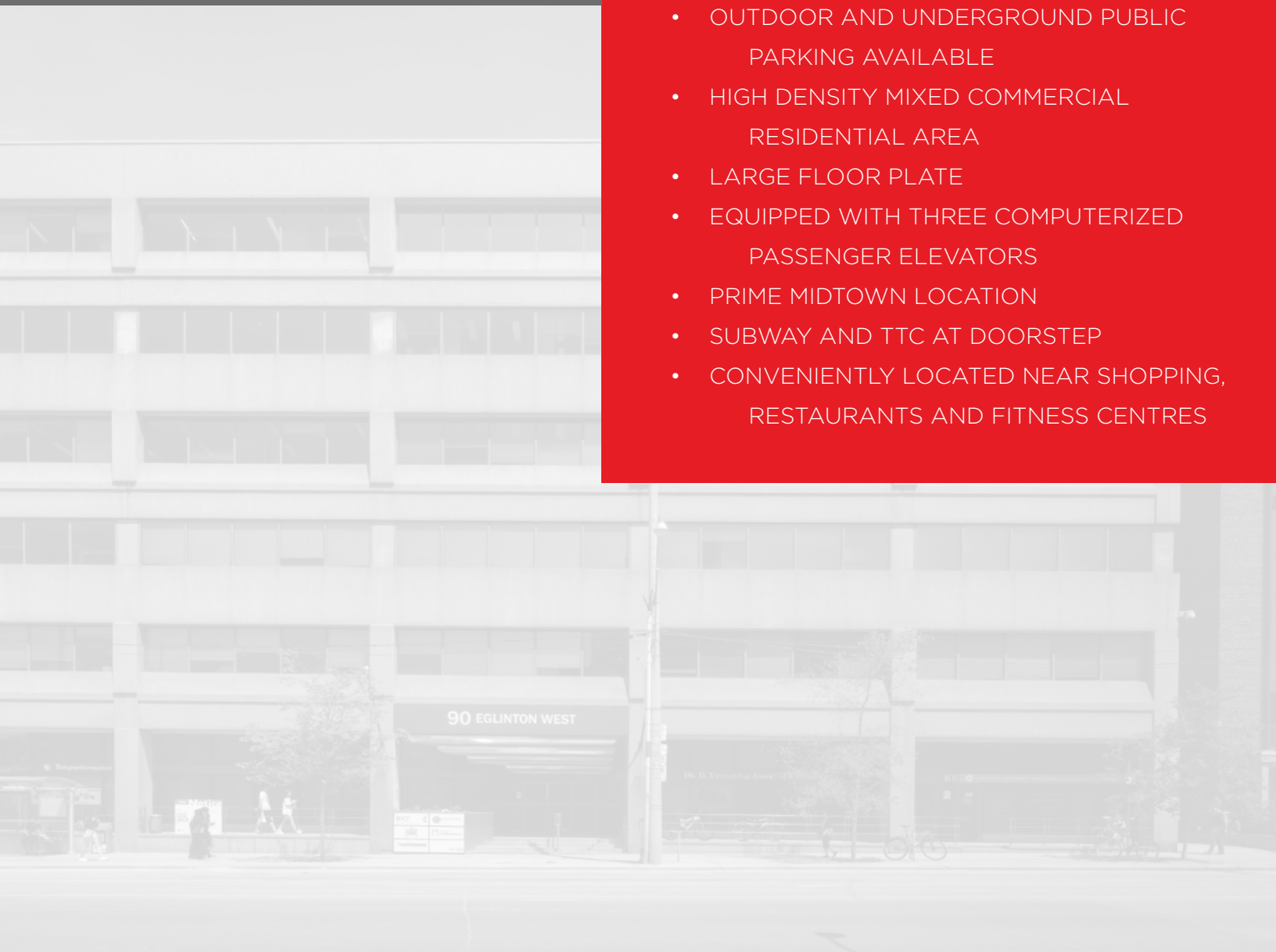
SUITE 107
2,288 SQ.FT.

PROPERTY

- 6-STOREY COMMERCIAL OFFICE BUILDING
- GROUND FLOOR RETAIL TENANTS
- REFLECTIVE GLASS EXTERIOR

AMENITIES

- BARRIER FREE ACCESS
- CARD ACCESS SECURITY SYSTEM
- OUTDOOR AND UNDERGROUND PUBLIC PARKING AVAILABLE
- HIGH DENSITY MIXED COMMERCIAL RESIDENTIAL AREA
- LARGE FLOOR PLATE
- EQUIPPED WITH THREE COMPUTERIZED PASSENGER ELEVATORS
- PRIME MIDTOWN LOCATION
- SUBWAY AND TTC AT DOORSTEP
- CONVENIENTLY LOCATED NEAR SHOPPING, RESTAURANTS AND FITNESS CENTRES



ABOUT 90 EGLINTON WEST

This prestigious 6-storey building is located on the north side of Eglinton Avenue and one block west of Yonge Street. There is underground tenant parking available. Enjoy many great and convenient amenities including: TTC, subway, restaurants, hotels and shops and much more!

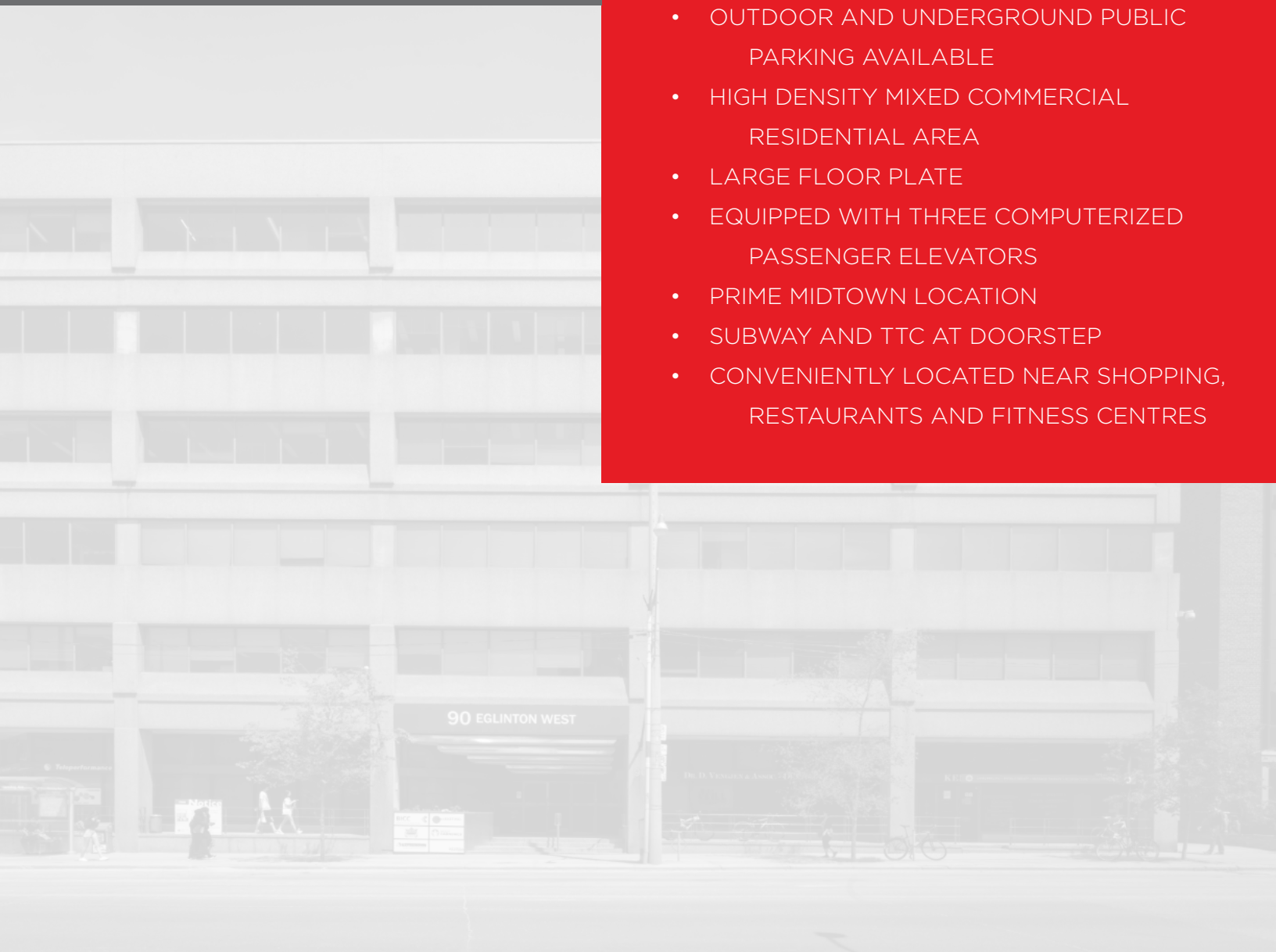
SUITE 302
5,832 SQ.FT.

PROPERTY

- 6-STOREY COMMERCIAL OFFICE BUILDING
- GROUND FLOOR RETAIL TENANTS
- REFLECTIVE GLASS EXTERIOR

AMENITIES

- BARRIER FREE ACCESS
- CARD ACCESS SECURITY SYSTEM
- OUTDOOR AND UNDERGROUND PUBLIC PARKING AVAILABLE
- HIGH DENSITY MIXED COMMERCIAL RESIDENTIAL AREA
- LARGE FLOOR PLATE
- EQUIPPED WITH THREE COMPUTERIZED PASSENGER ELEVATORS
- PRIME MIDTOWN LOCATION
- SUBWAY AND TTC AT DOORSTEP
- CONVENIENTLY LOCATED NEAR SHOPPING, RESTAURANTS AND FITNESS CENTRES



90 EGLINTON WEST

